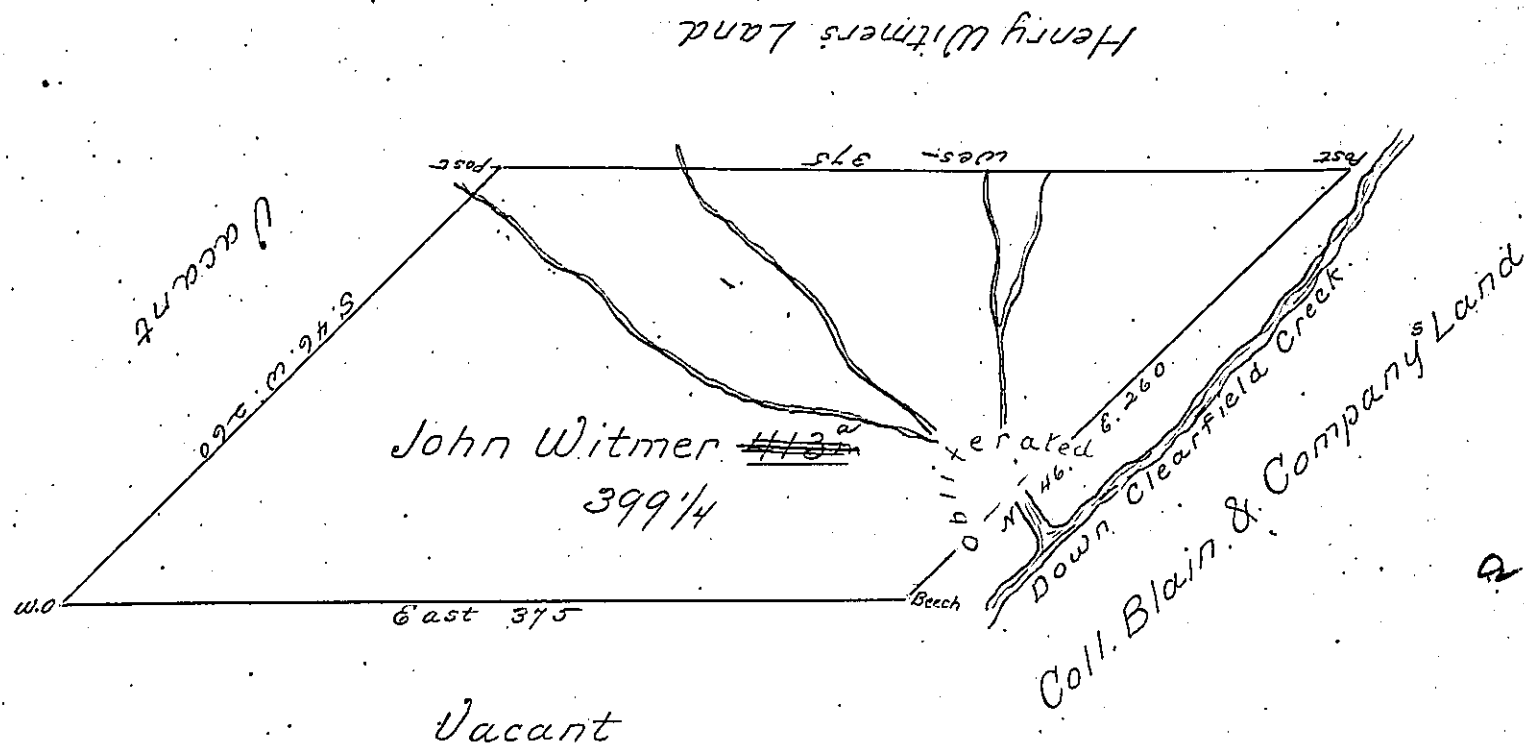


K- 347



A Draught of a Tract of Land Situate  
 on Witmers Run a Branch of the Clearfield Creek  
 in Bedford County Surveyed the fourth Day of  
 November 1784 In pursuance of a Warrant granted  
 to John Witmer dated July the first 1784 Con-  
 taining Three Hundred and ~~thirty~~<sup>ninety nine</sup> acres  $\frac{1}{4}$   
 and eight ~~perches~~ and the usual allowance of  
 Six per Cent for Roads.

George Woods Esq.  
 To John Lukins Esq. Sr.

IN TESTIMONY that the above is a copy of the original remaining on file in  
 the Department of Internal Affairs of Pennsylvania, made  
 conformably to an Act of Assembly approved the 16th day of  
 February, 1833, I have hereunto set my Hand and caused  
 the Seal of said Department to be affixed at Harrisburg,  
 this second day of July 1901

*James W. Patton*  
 Secretary of Internal Affairs.